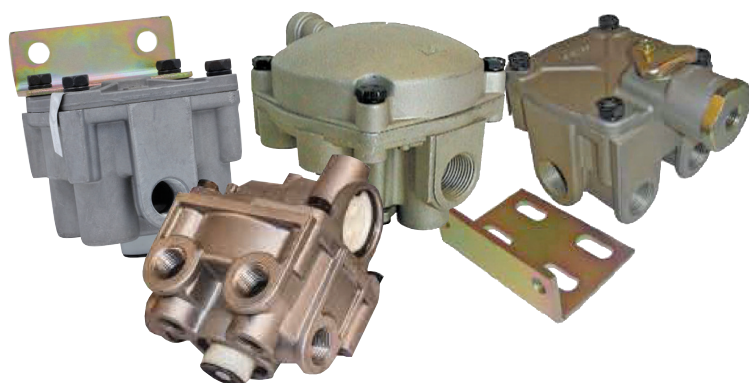




Premium Products

- High quality alternative to OEM Brands.
- Custom engineered to meet original specs.
- Detailed inspection process ensures strict quality standards.

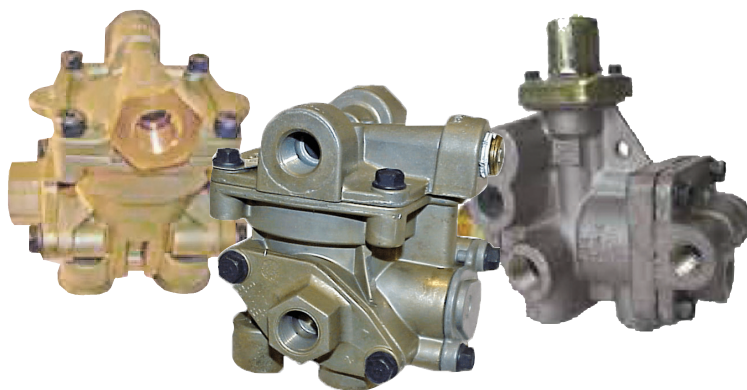
Relay Valves



Part #	Description
BH103009	R-12; Horizontal ports; Crack Pressure 4 psi
BH102626	R-12; Vertical ports 1/2" delivery; Crack Pressure 4 psi
BH065145	Bobtail proportioning; Crack Pressure 4 psi
BH103010	R-14; Horizontal ports; Crack Pressure 4 psi
BHKN28510	RG-2; Ports 3/8" delivery, 1/2" delivery, 1/4" NPT control; Crack Pressure: 5.5 PSI
BHSL110380	Service Relay; Ports 3/8" NPT delivery; LOV 4 low opening; Crack Pressure 1.5 psi
BHSL110415	Sealco design; 4 vertical delivery ports; LOV-4; Crack Pressure 1.5 psi
BH281865	RE-6; Ports 1/4" NPT service, emergency; 3/4" supply; 3/8" & 1/4" delivery; Crack Pressure 4.5 psi
BH286171	E-6 brake valve; ports 3/8" NTP supply & delivery

Part #	Description
BH065437	SR-5; Ports 3/4"; SB reservoir trailer applications
BHKN26000	RT-4; Crack Pressure 4 psi; PPV Closing Pressure 70 psi; trailer applications
BHKN28600	FF-2 Full Function Trailer; Ports 3/4"; NPTM reservoir
BHKN28601	FF-2 Full Function Trailer; Ports 1/2"; NPTM reservoir
BHSL110170	Spring Brake; Ports 1/2" NPT A & B; Crack Pressure 4 psi; PPV Closing Pressure 70 psi; protected reservoir
BHSL110171	Spring Brake; Ports 1/2" NPT A 3/8" NPTB; Crack Pressure 4 psi; PPV Closing Pressure 70 psi; protected reservoir
BH110500	Spring Brake Priority
BH110700	Service Reservoir Priority
BHSL110800	Spring Brake Priority Control Valve

Air Spring Brake Valves



Additional selection of Valves available
Backed by a one year/100,000 mile warranty

*TruckPro warrants each Armada Air Dryer to the original purchaser against defects in materials and workmanship when used under normal operating conditions for 12 months from the date of purchase or for 100,000 miles, whichever occurs first.

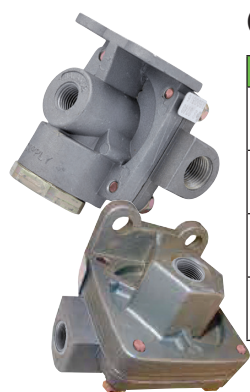


TruckPro Shop heavy duty truck & trailer parts 24/7 at TruckPro.com.



Premium Products

- High quality alternative to OEM Brands.
- Custom engineered to meet original specs.
- Detailed inspection process ensures strict quality standards.



Quick Release Valves

Part #	Description
BH229859	QR-1; Ports 3/8" NPT supply & delivery
BH229860	QR-1; Ports 1/2" NPT supply, 3/8" delivery
BH289714	QR-1C; Ports 1/4" NPT supply & balance, 3/8" delivery
BH800333	Quick Release; Mounts to tractor protection valve



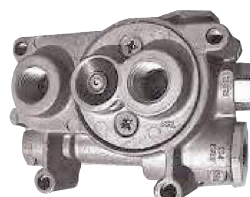
Dash Control Valves

Part #	Description
BH276567	PP1 Style; Ports 1/8" NPT
BH800516	MV-3 Style; Ports 1/4" NPT
BH229635	TW-1 Style; Ports 1/8" NPT; Includes chrome plated flip handle
BH800257	MV3 type; 5 x 3/8" PLC fittings



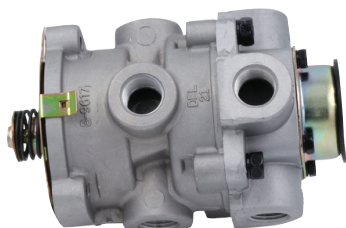
Safety Valves

Part #	Description
BH131081	ST-4 Safety; Ports 1/2" NPT; 250 psi; non-adjustable, low profile; compressor applications
BH284142	ST-3 Safety; Ports 1/4" NPT thread; 150 psi; non-adjustable
BH131081	ST-4 Safety; ports 1/2" NPT; 250 psi



Tractor Protection Valves

Part #	Description
BH279000	TP-3; Ports 1/4" & 1/2" NPT Emergency; 3/8" & 1/2" NPT Service
BH288605	TP-5; Manifold Control Valve



Brake Valve

Part #	Description
BH286171	E-6 Brake Valve; Ports 3/8" NPT supply & delivery

Additional selection of Valves available
Backed by a one year/100,000 mile warranty

*TruckPro warrants each Armada Air Dryer to the original purchaser against defects in materials and workmanship when used under normal operating conditions for 12 months from the date of purchase or for 100,000 miles, whichever occurs first.



TruckPro Shop heavy duty truck & trailer parts 24/7 at TruckPro.com.